

APPENDIX 14.1 & 14.2

ARCHAEOLOGICAL & CULTURAL HERITAGE – FIGURES & PLATES

RECEIVED: 08/07/2024

## Appendix 14.1

### Archaeological and Cultural Heritage – Figures

RECEIVED: 08/07/2024

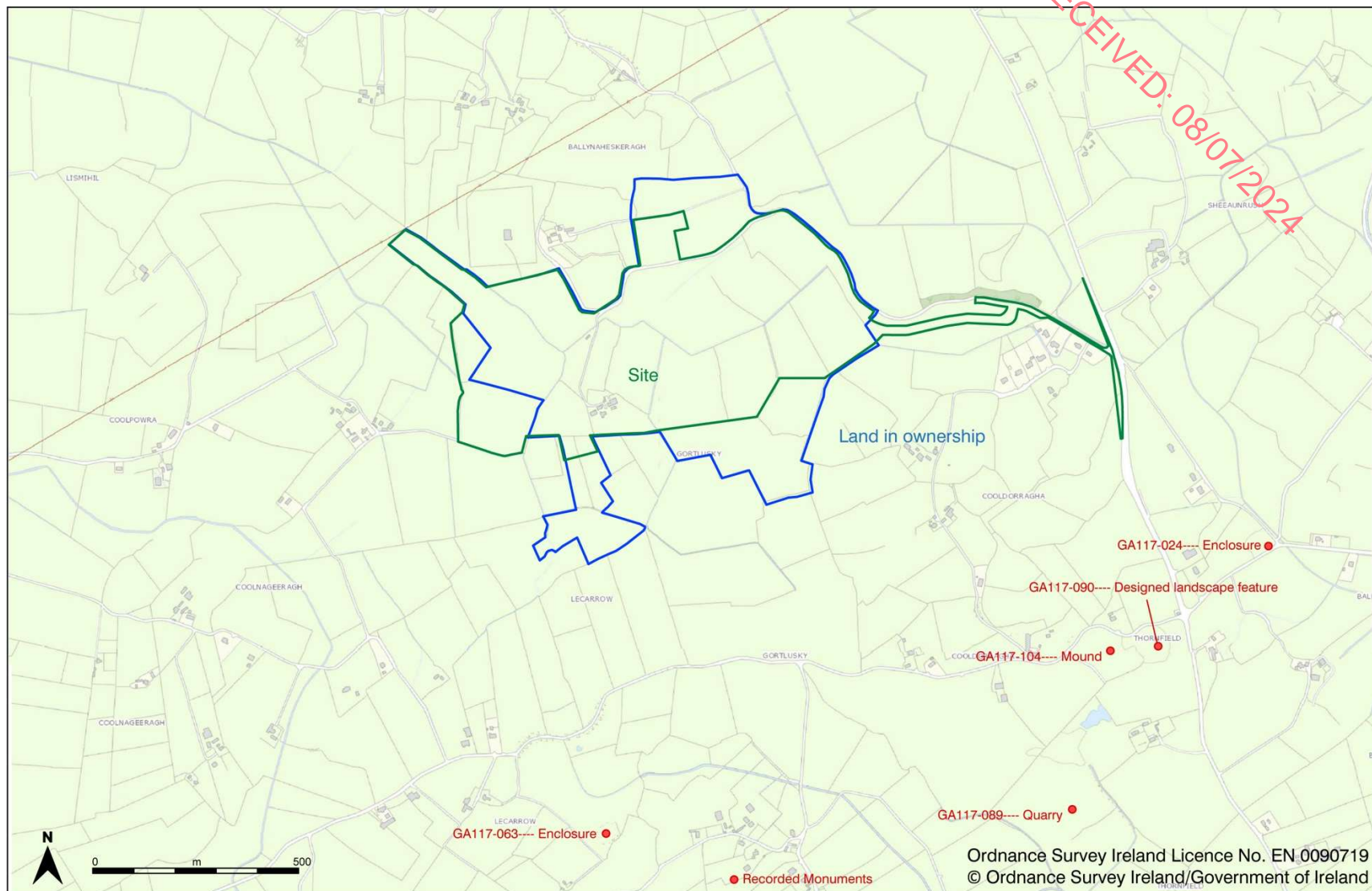


Figure 1: Location of site and nearby Recorded Monuments.



Figure 2: Proposed development, showing locations of OCGT, GIS, SYNCON + LDES, and ancillary services/ground works.



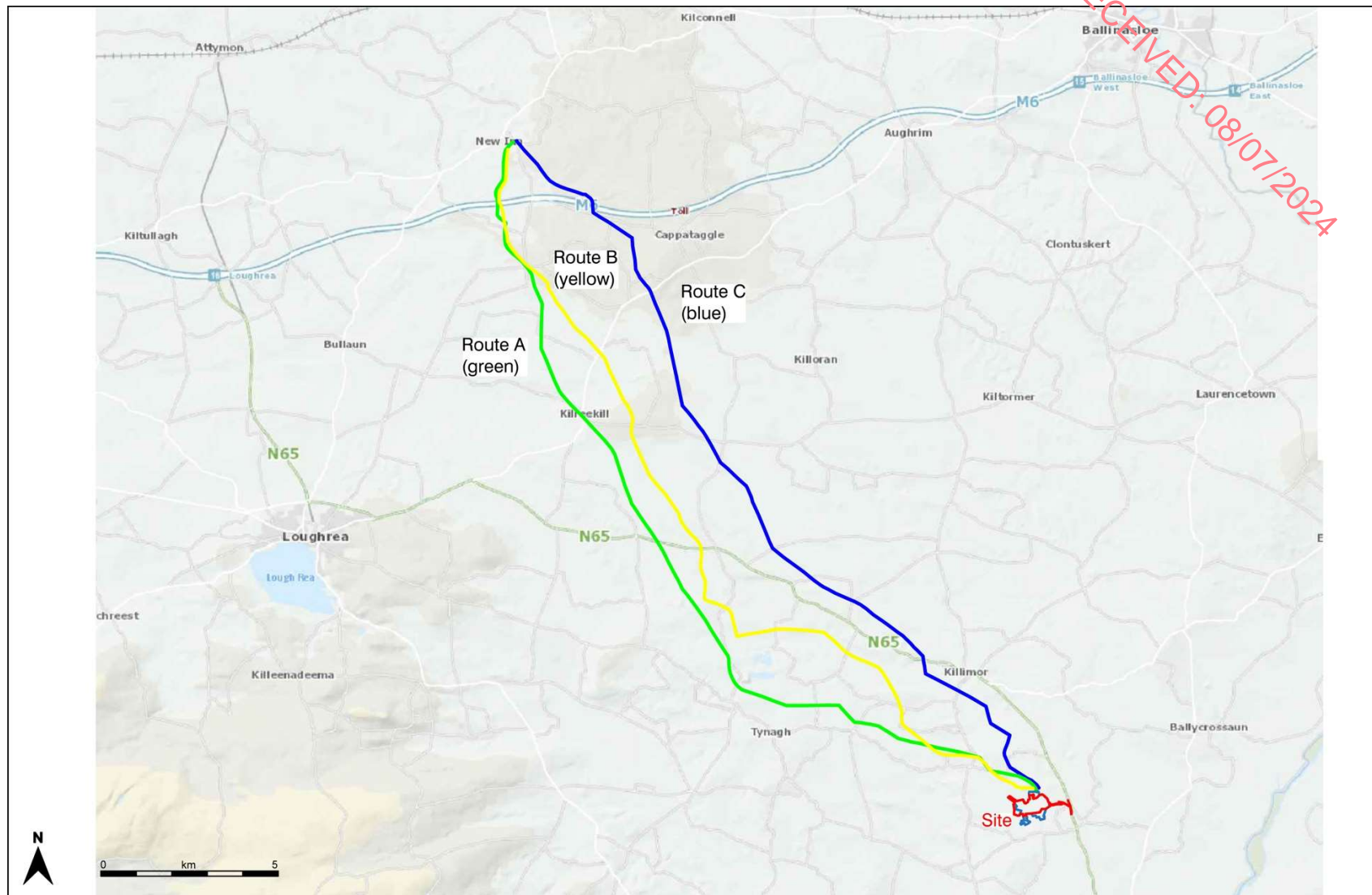


Figure 3: Indicative route for associated gas pipeline (three options) in relation to location of site.



Figure 4: Extract from William Larkin's 1819 *A Map of the County of Galway* (sheet 12), showing approximate location of site.

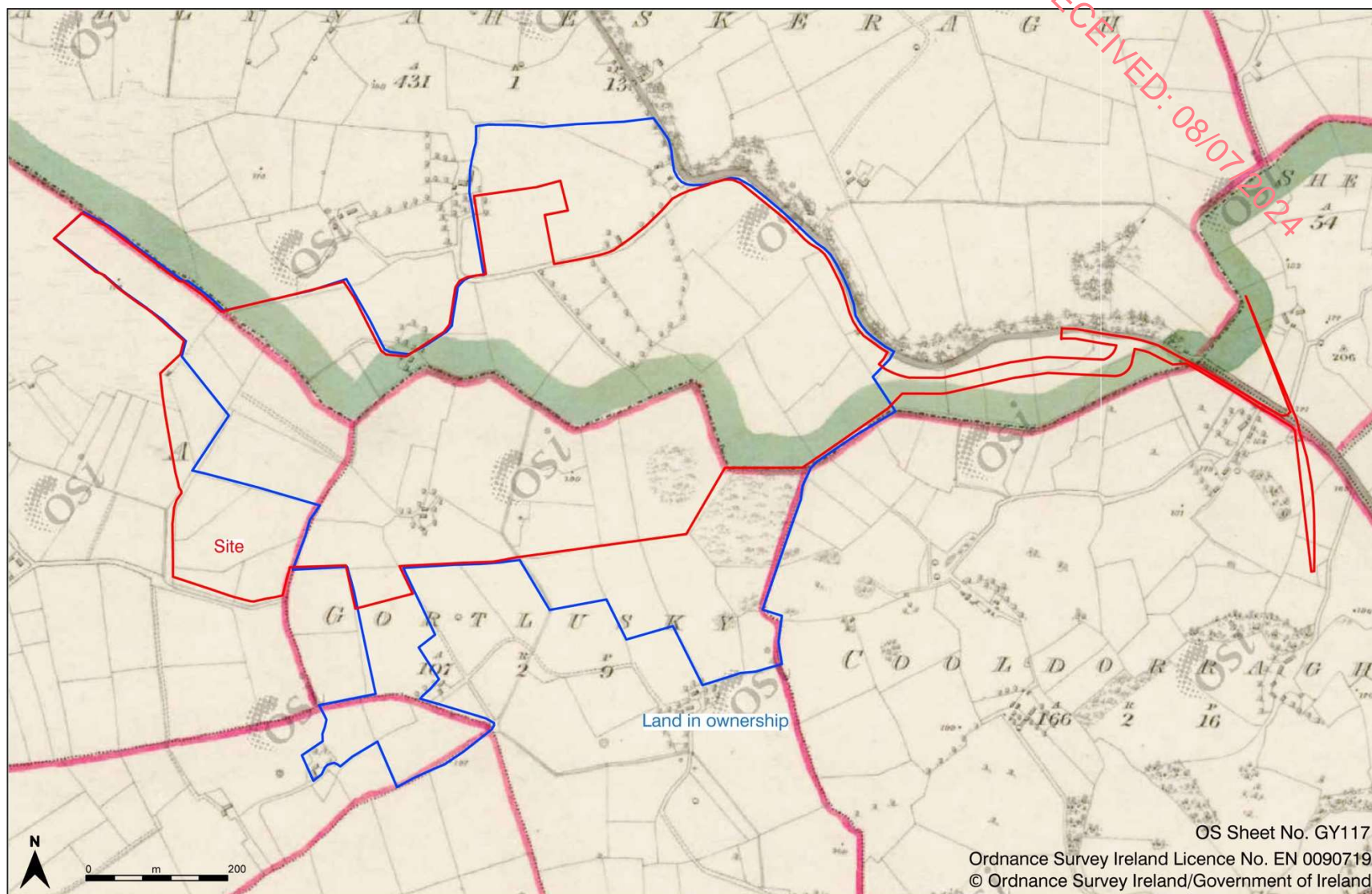


Figure 5: Extract from first edition OS 6-inch map (surveyed 1837 – published 1841), showing location of site.



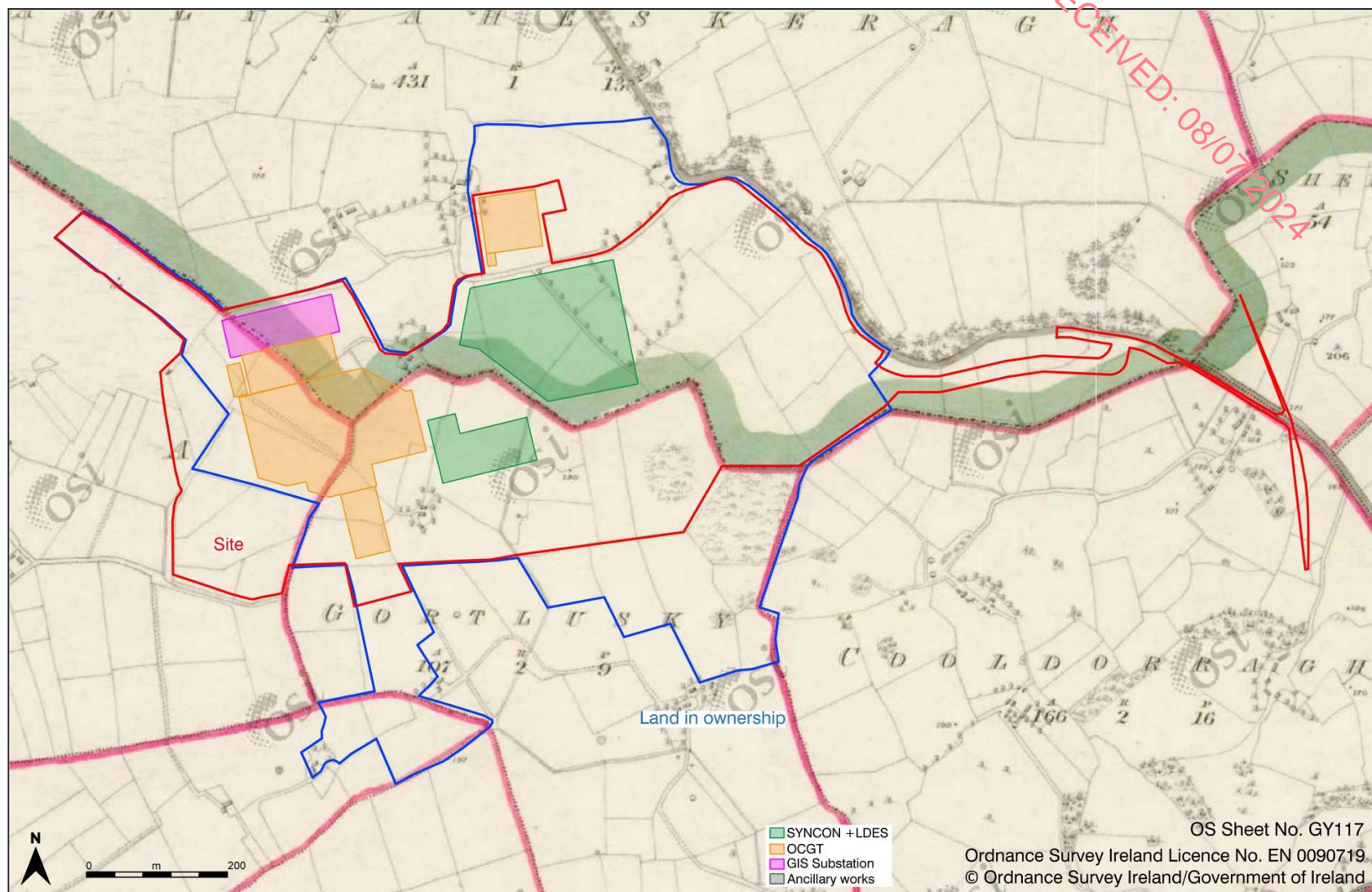


Figure 6: Extract from first edition OS 6-inch map (surveyed 1837 – published 1841), showing locations of OCGT, GIS, and SYNCON + LDES.



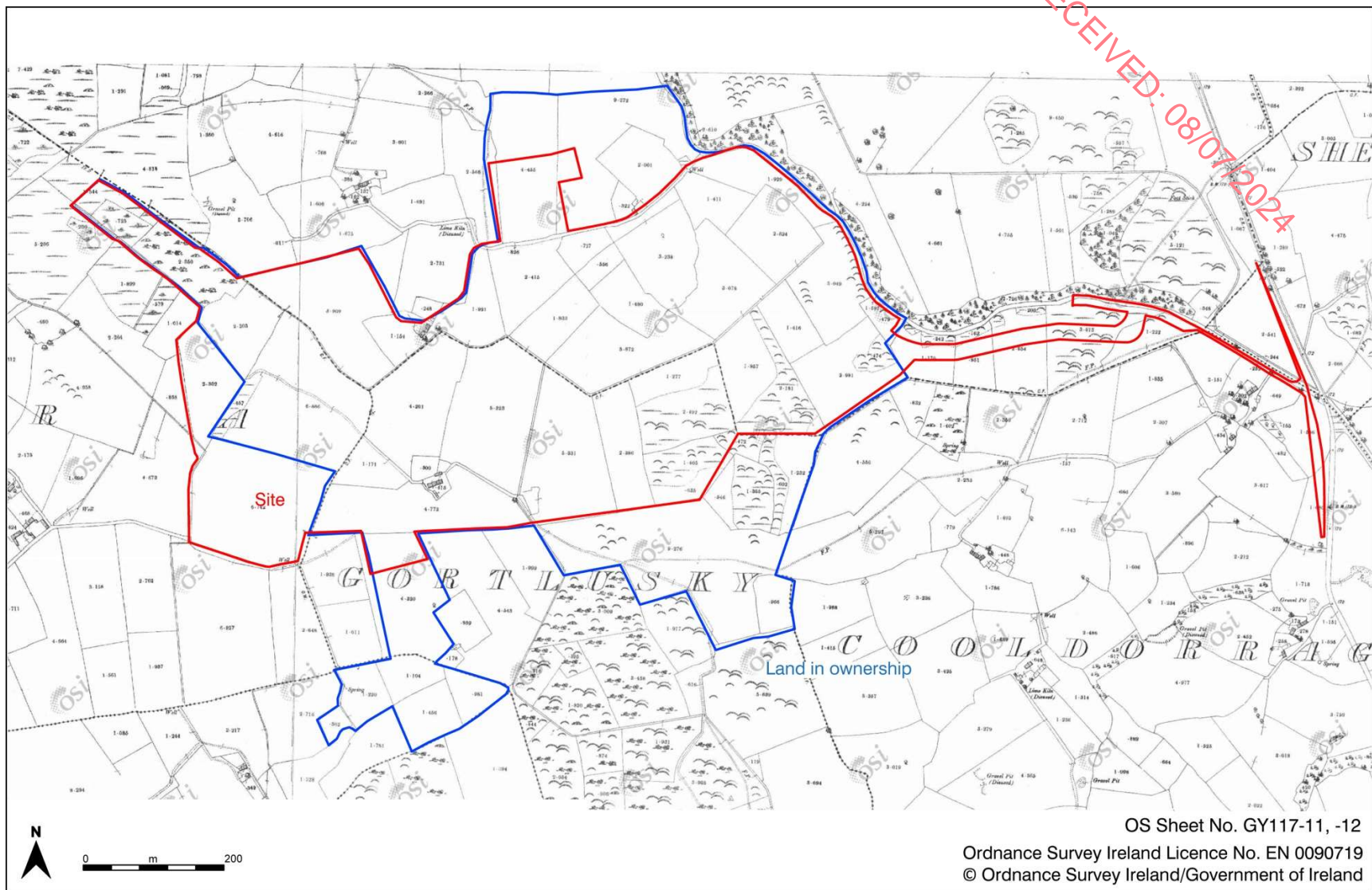


Figure 7: Extract from third edition OS 25-inch map (surveyed 1892 – published 1894), showing location of site.

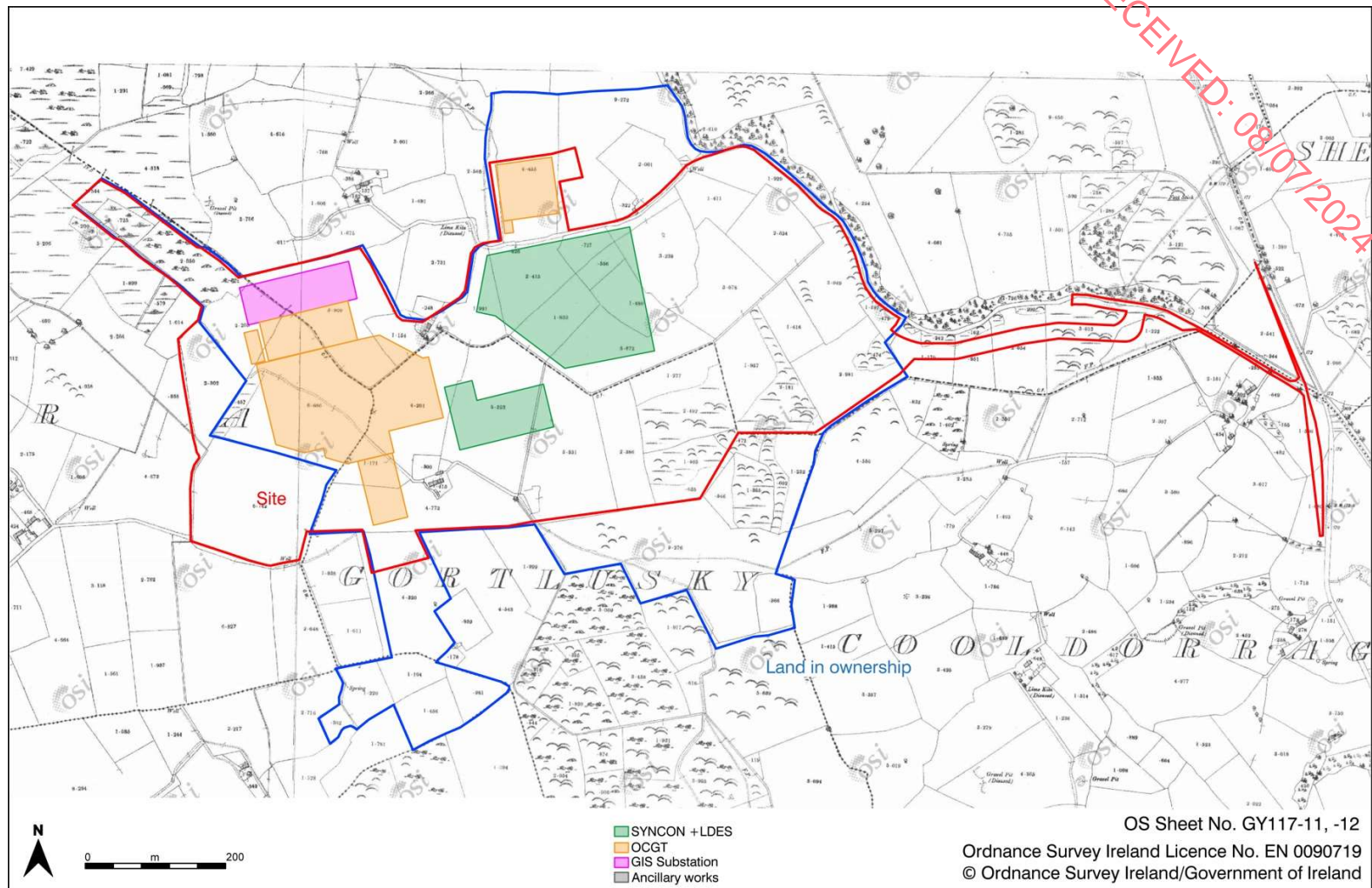


Figure 8: Extract from third edition OS 25-inch map (surveyed 1892 – published 1894), showing locations of OCGT, GIS and SYNCON + LDES.





Figure 9: Aerial view of site, showing geophysical survey results (greyscale image).



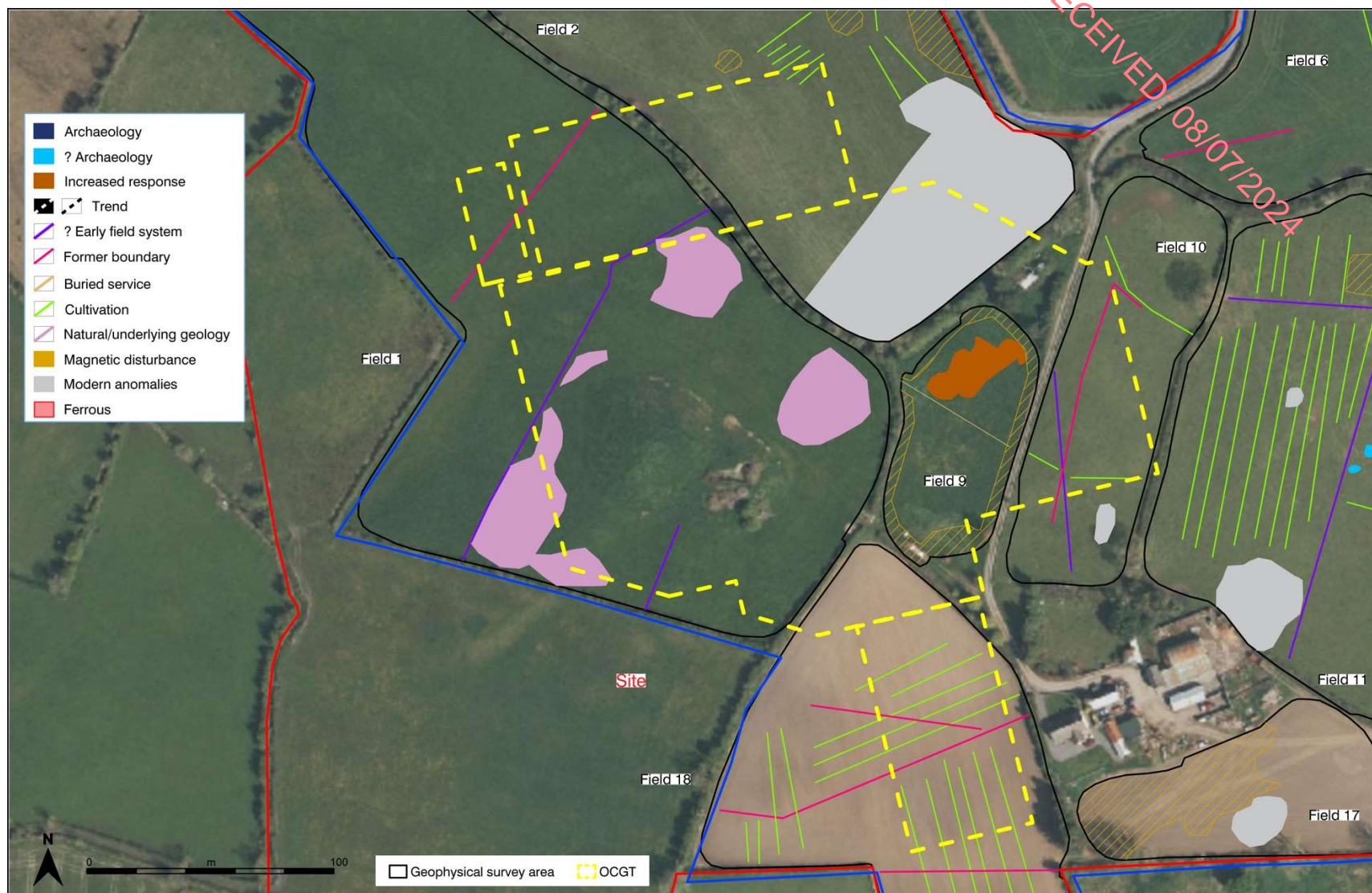


Figure 10: Aerial view of site (OCGT), showing geophysical survey interpretation.



Figure 11: Aerial view of site (OCGT), showing geophysical survey interpretation.



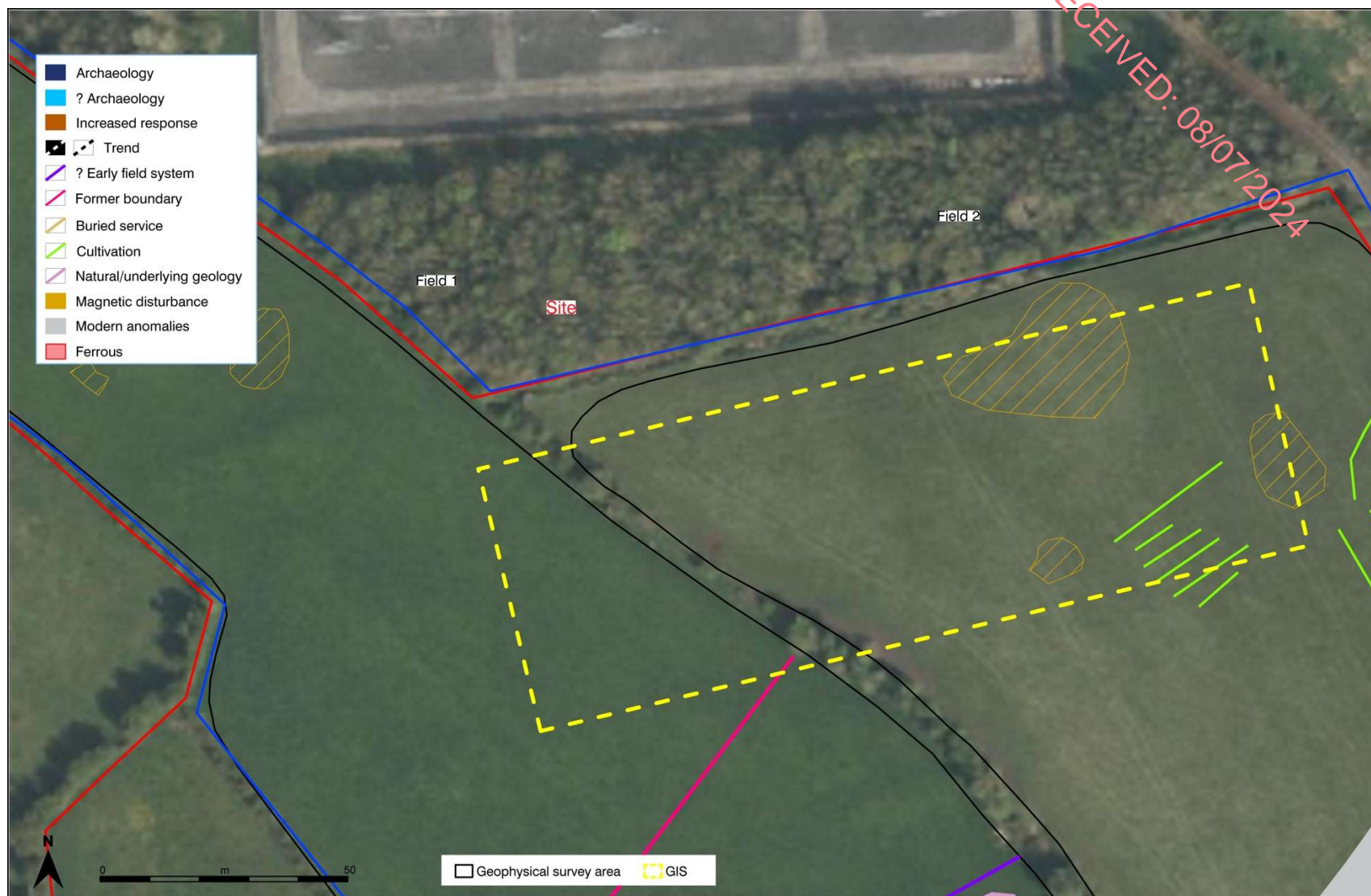


Figure 12: Aerial view of site (GIS), showing geophysical survey interpretation.



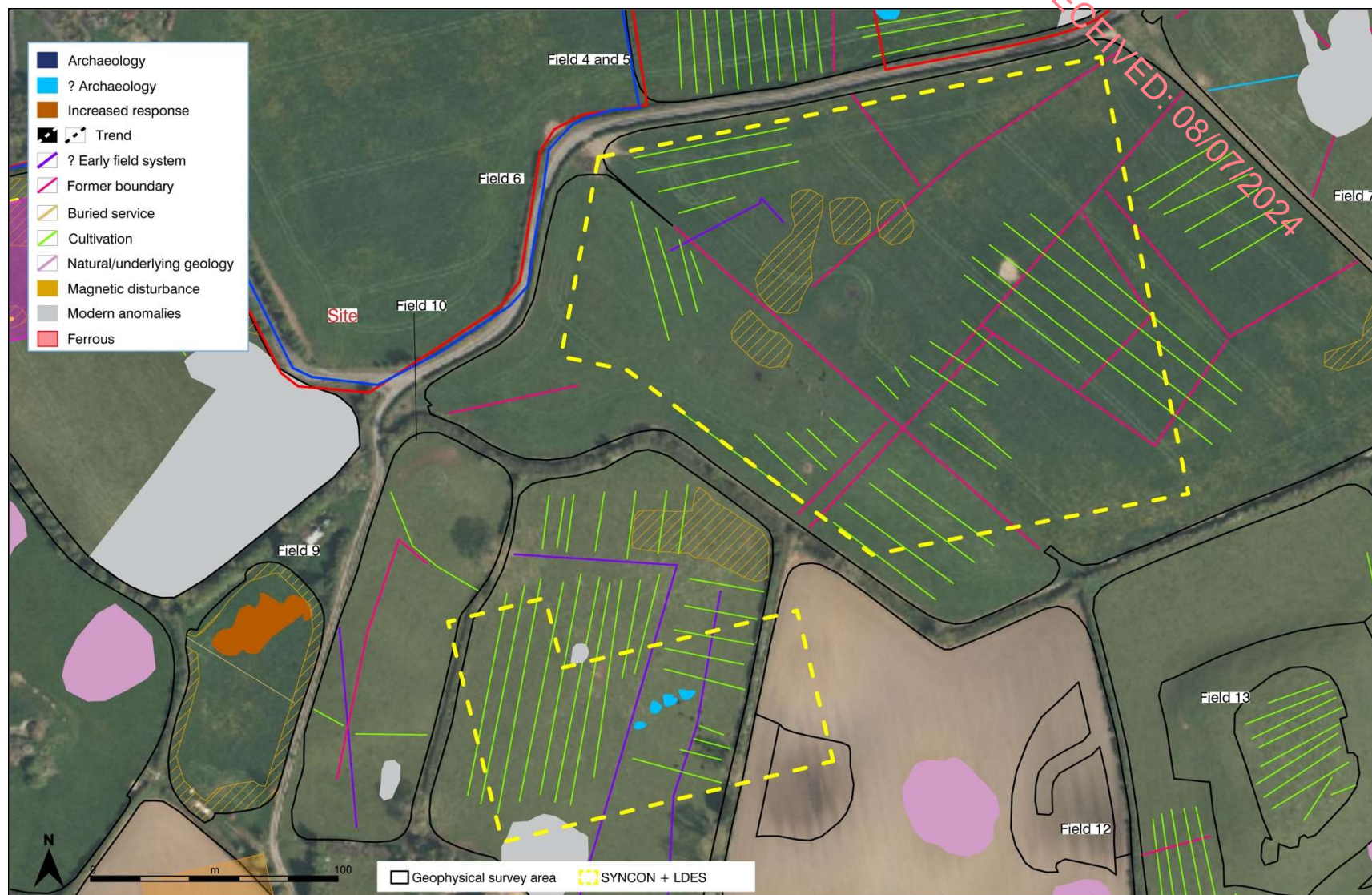


Figure 13: Aerial view of site (SYNCON + LDES), showing geophysical survey interpretation.

## Appendix 14.2

### Archaeological and Cultural Heritage – Plates

RECEIVED: 08/07/2024



Plate 1: Aerial view of site (OCGT).



Plate 2: Aerial view of site (GIS).



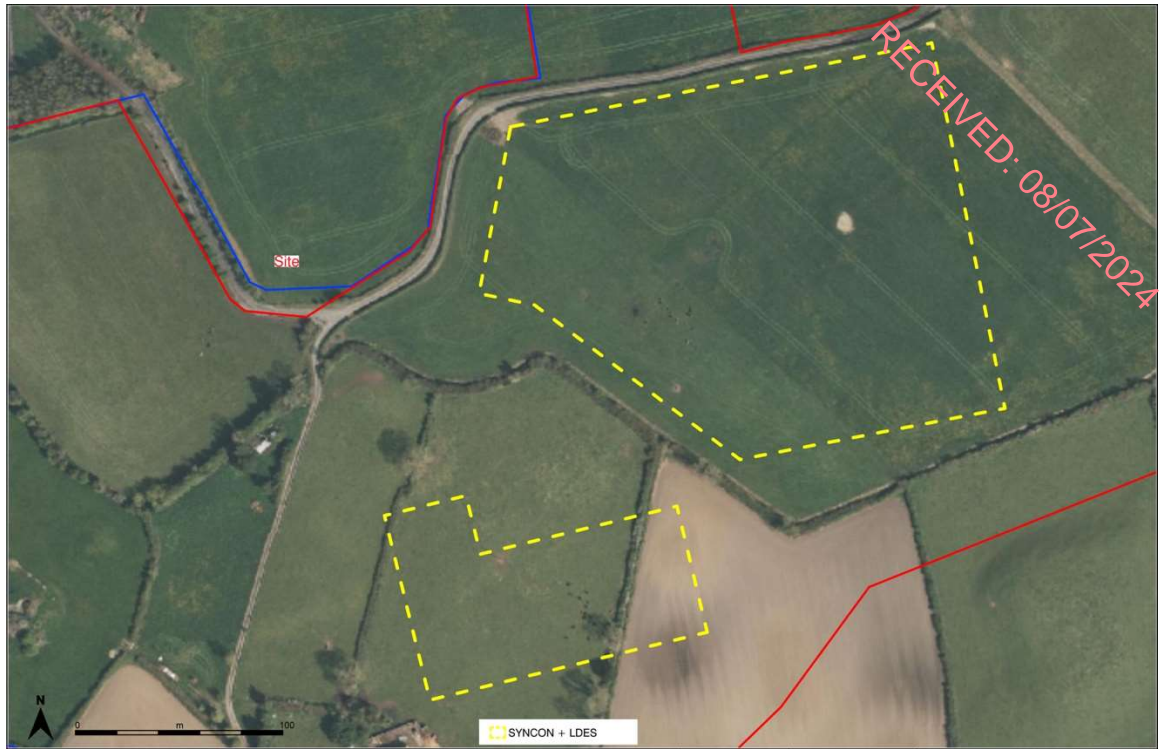


Plate 3: Aerial view of site (SYNCON + LDES).



Plate 4: Drumlin in western extent of site (Field 1), looking northwest.



Plate 5: Undulating terrain in western extent of site (Field 1), looking southwest.



Plate 6: View of land east of farmyard, looking southeast.





Plate 7: Waterlogged terrain in southern extent of site (Field 12), looking north, with field boundary of hedgerow with occasional mature trees visible to left.



Plate 8: Waterlogged conditions in low lying land in southern extent of site (Field 12) with drumlin in background (Field 13), looking east.





Plate 9: View from summit of drumlin in southeast area of site (Field 13), looking south.

This page is intentionally blank.

RECEIVED: 08/07/2024